

# WEB

Advertising on a website dedicated to tour planning information puts you in front of active travel planners. Grouptourmagazine.com connects you to active tour planners while they research and build their itineraries.

## Net Rates:

### A. LEADERBOARD

(728 pixels wide by 90 pixels tall)

<b>Monthly</b>	<b>\$1,000</b>
<b>Quarterly</b>	<b>\$2,700</b>

### B. INLINE RECTANGLE

(300 pixels wide by 250 pixels tall)

<b>Monthly</b>	<b>\$750</b>
<b>Quarterly</b>	<b>\$2,000</b>

### C. RUN OF SITE POP-UP

(728 pixels wide by 90 pixels tall)

<b>A. Pop-up</b>	<b>\$1,500/Month</b>
------------------	----------------------

This ad style stays visible on visitors' screens as they explore the website's various pages.

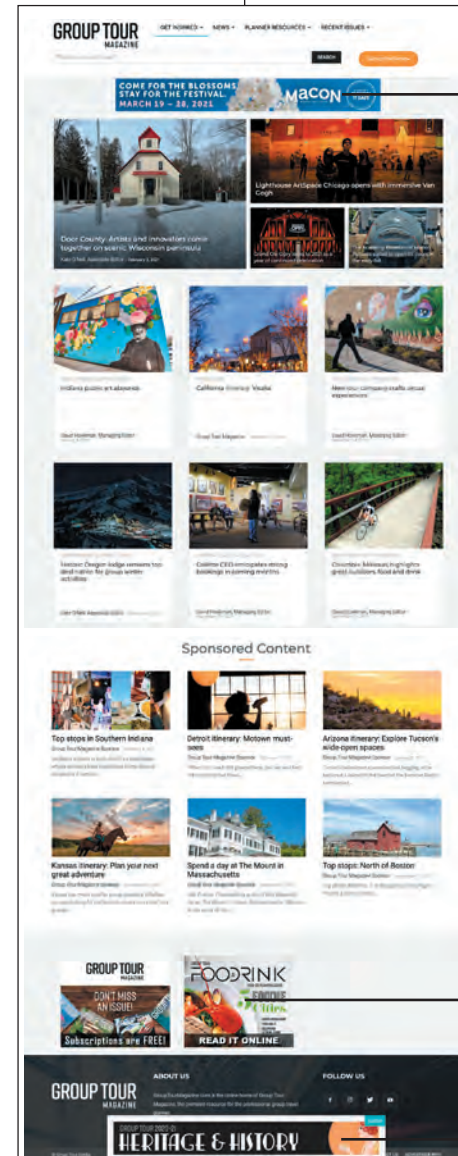
### SUPPLIER PROFILE/WEB LISTING

<b>1-Year</b>	<b>\$750</b>
---------------	--------------

Activate your supplier profile and be searchable to active tour planners. Email your Media Consultant (page 18) for more information.

### TOP PAGES:

-  Home
-  Get Inspired
-  News



A

B

C

Email high-resolution JPEGs to:  
**artwork@grouptour.com**  
 File size cannot exceed 72k.